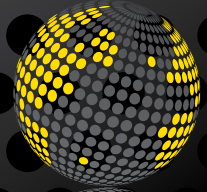




# THE HOME LIFT

In compliance with the new  
Machine Directive 2006/42/EC



**No.1** in The World  
Hydro Lift Systems

## Quality

The GMV Home Lift makes architectural barriers a thing of the past, it is ideal for the aged, disabled or physically challenged people. They can be easily installed in both residential and commercial properties.

The quality of the components used ensures performance and operation throughout time, therefore minimising the need for maintenance.

Whilst in operation it consumes just as much electricity as a normal household appliance and is available with a wide choice of accessories and finishes to suit all tastes.



## Affordable

The Home Lift can be installed in just a few days and minimal fixing points are required.

As an extra feature in case of a power failure, an automatic device drives the car to the floor and opens the doors to allow the passenger to exit. It has an infra-red barrier on the door sides for greater safety fitted as standard, making the Home Lift costs contained and affordable compared to any ordinary lift.

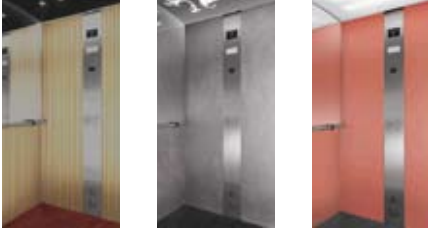
## Features

- Lift available with either MR (machine in purposely-allocated area), or MRL-MC (machine room less with machine in a cabinet).
- In compliance with the new Machine Directive 2006/42/EC.
- The preliminary wiring is fully assembled (plugged) which reduces the amount of cables.
- Failure log including date and time for easier analysis.
- Remote diagnostics by phone or GSM.
- Remote software updating.
- Can be connected to a common 230v power supply.
- Runs on less energy than most standard household appliances . Lower costs.
- Option for single phase.

## Finishes

There is a wide choice of elegant accessories and finishes, from flooring to ceiling.

Contact us now for the wide variety of options available.



## Specification

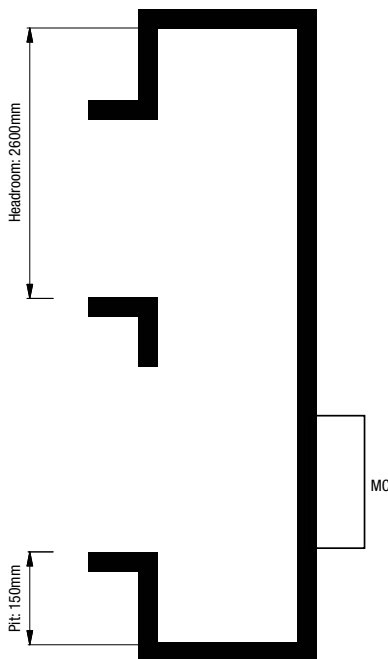
- Rated loads: 250KG, 300KG, 350KG, 375KG or 400KG.
- Rated speed: 0,15m/s.
- Car Dimensions: From 750mm width by 1000mm depth up to 900mm width by 1200mm depth.

## Operation

- Doors: Twin or triple panel telescopic doors, either finished in Polimod (pre-painted sheet metal) or Scotch bright stainless Steel. In compliance with standard fire rating EN81-58 class E120-EI 120.
- Power Supply: 230volt, single phase.
- Travel Distance: Up to 10metres.
- Levels Served: Maximum 4 stops.
- Number of Openings: Maximum of Two per floor.
- Pump Type: Submersible with variable speed valve levelling.

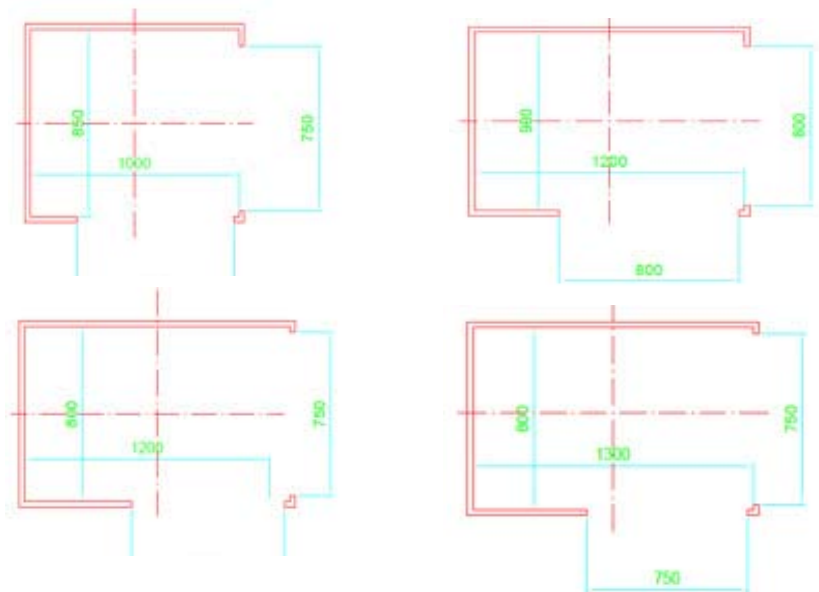
## Shaft Section

Minimum pit required is 150mm and minimum headroom requirement is 2600mm



## Cab Configurations

There are five types of car configuration available, with five different load ratings (250kg, 300kg, 350kg, 375&400kg)



UNI EN ISO 9001  
Certified Company



GMV UK, 1 Mariner Court, Calder Park  
Wakefield, WF4 3FL

e-mail: [martin.summers@gmvlifts.co.uk](mailto:martin.summers@gmvlifts.co.uk)  
[www.gmvlifts.co.uk](http://www.gmvlifts.co.uk)

Tel.: +44 (0) 7590 960 466  
Fax: +44 (0) 7595 400 285